

H SERIES BALL VIBRATORS

Heavy-Duty Rotary Pneumatic Ball Vibrators



H Series Pneumatic Rotary Ball Vibrators by Houston Vibrator feature rugged cast iron housings and sealed construction to ensure reliable performance and long service life, even in harsh environments.

The H Series is an economical solution to keep stubborn materials flowing in bins, hoppers, chutes, pipes, and other areas where materials tend to hang up. H Series models are constructed of a CNC machined ductile iron casting, high grade chrome steel ball, hardened steel raceways enclosed with powdered metal side caps, and fastened with high gauge retaining rings. The quality construction of the H Series units allows them to start easily and withstand the effects of dirt, moisture, and temperature changes.

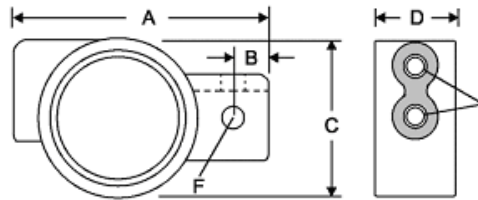
10 models available:

- Force outputs up to 800 force lbs.
- Frequencies from 3100 to 26000 VPM.
- Three different configurations
- Three different inlet/exhaust configurations

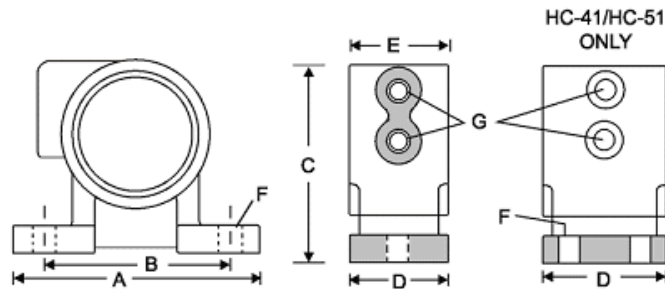
MODEL	STARTING PRESSURE PSI		BALL VIBRATOR PERFORMANCE DATA												
			AT 20 PSI			AT 40 PSI			AT 60 PSI			AT 80 PSI			WT (lbs.)
	HORIZ.	VERT.	VPM	FORCE LBS	CFM	VPM	FORCE LBS	CFM	VPM	FORCE LBS	CFM	VPM	FORCE LBS	CFM	
HB-10	2	5	16500	25	2	21000	38	4	25000	55	5	26000	60	8	1.0
HB-19	12	22	11000	120	3	13000	195	7	16000	270	11	18000	340	15	2.5
HC-19	11	22	11000	120	3	13000	195	7	16000	270	11	18000	340	15	2.5
HC-25	16	32	7000	180	6	10000	285	9	11500	380	13	13000	420	16	4.5
HC-35	23	46	7000	320	6	9000	520	12	10000	685	17	11000	800	24	4.5
HC-41	25	55	3200	240	13	4000	370	21	4400	450	27	4700	514	33	15.0
HC-51	30	60	3100	350	13	4000	580	20	4300	680	27	4400	715	33	15.0
H U-13	3	6	12500	35	3	15500	55	5	19500	95	7	21000	110	8	1.5
H U-19	10	20	11000	110	4	13000	175	7	16000	260	10	17000	300	12	2.5
H U-25	25	30	7500	175	6	9500	290	10	11000	380	13	12500	410	15	4.0

Operating Data Obtained on heavy laboratory test block. Frequency and force will decrease on a less rigid mount.

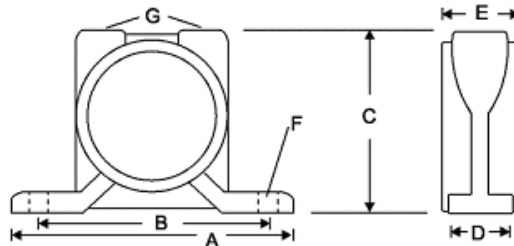
HB-10
HB-19



HC-19
HC-25
HC-35
HC-41
HC-51



HU-13
HU-19
HU-25



MODEL	A	B	C	D	E	F	G (N.P.T.)	WEIGHT (LBS.)
HB - 10	2.187	0.5	2.00	1.25	---	0.312	1/8	1.0
HB - 19	4.437	0.5	2.937	1.687	---	0.437	1/4	2.5
HC - 19	5.312	4.00	3.437	1.25	1.50	0.437	1/4	2.5
HC - 25	5.50	4.00	4.250	2.125	2.125	0.500	1/4	4.5
HC - 35	5.50	4.00	4.250	2.125	2.125	0.500	1/4	4.5
HC - 41	6.62	5.5	6.0	2.9375	3.125	4-3/8	3/8	15
HC - 51	6.62	5.5	6.0	2.9375	3.125	4-3/8	3/8	15
H U - 13	5.25	4.00	2.625	1.00	1.188	0.437	1/8	1.5
H U - 19	5.00	4.00	3.437	1.312	1.50	0.437	1/4	2.5
H U - 25	6.62	5.00	4.00	1.50	1.75	0.50	1/4	4.0